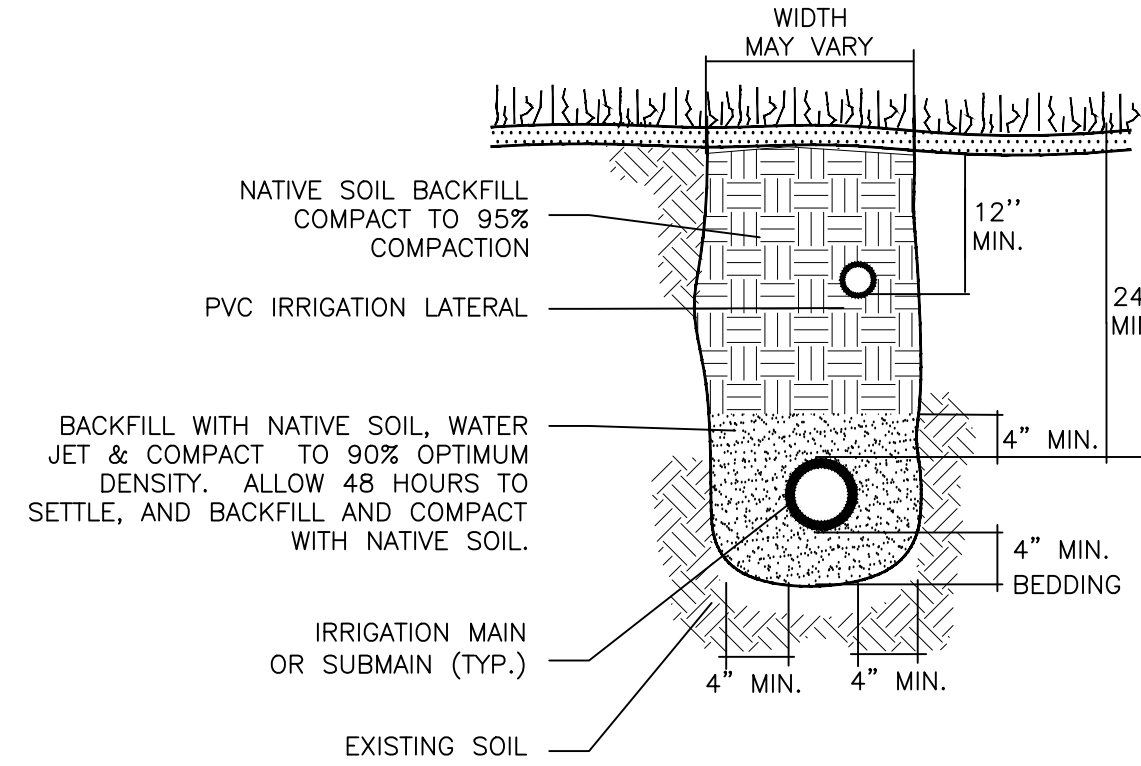
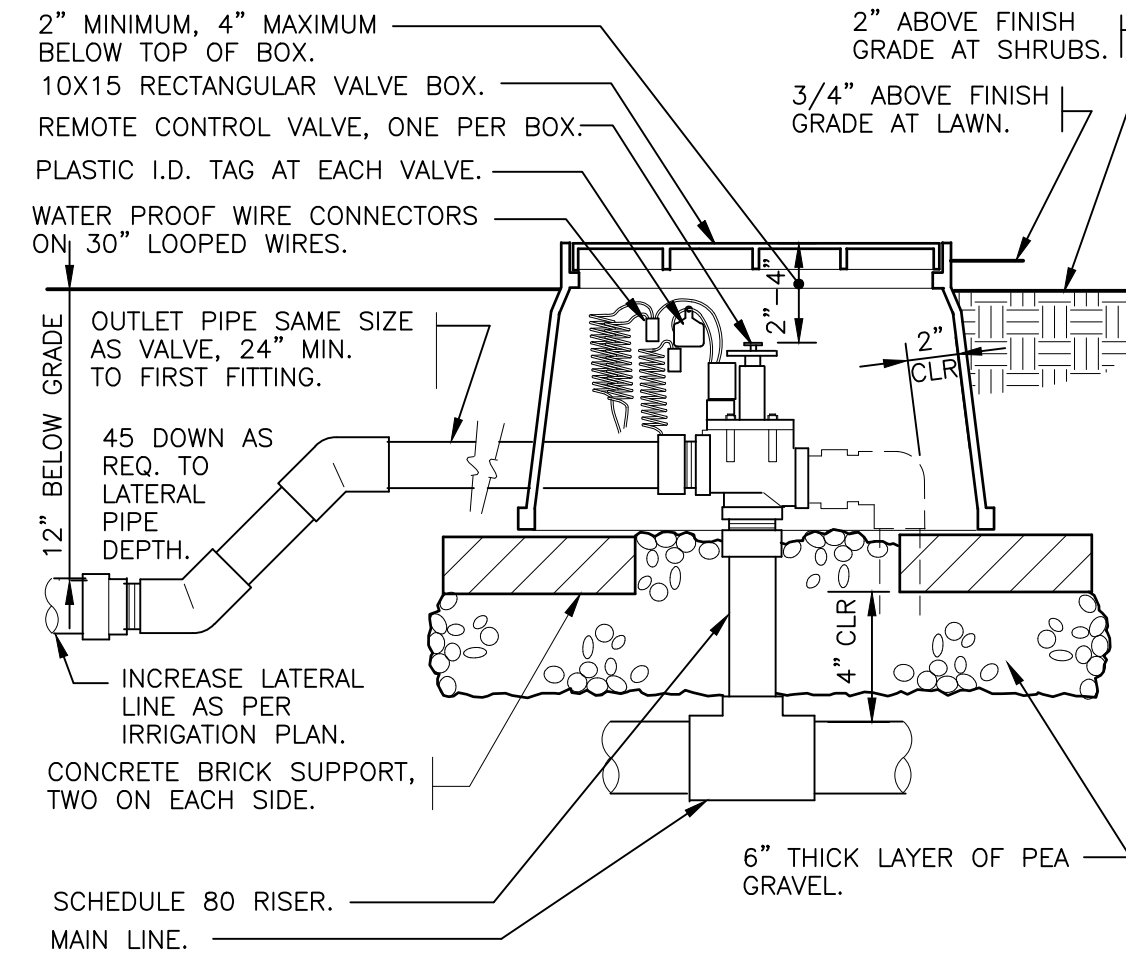


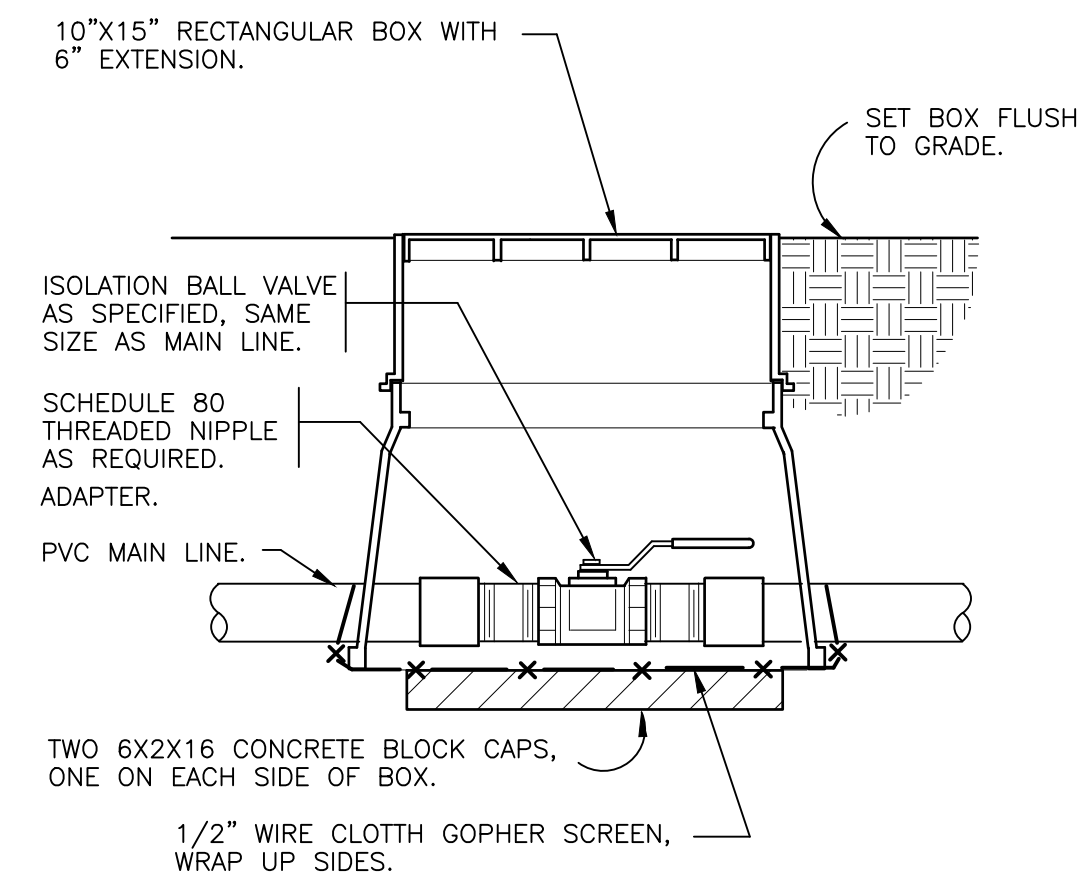
1 THRUST BLOCKING
 $3/4'' = 1'-0''$ 32 8409.76-01



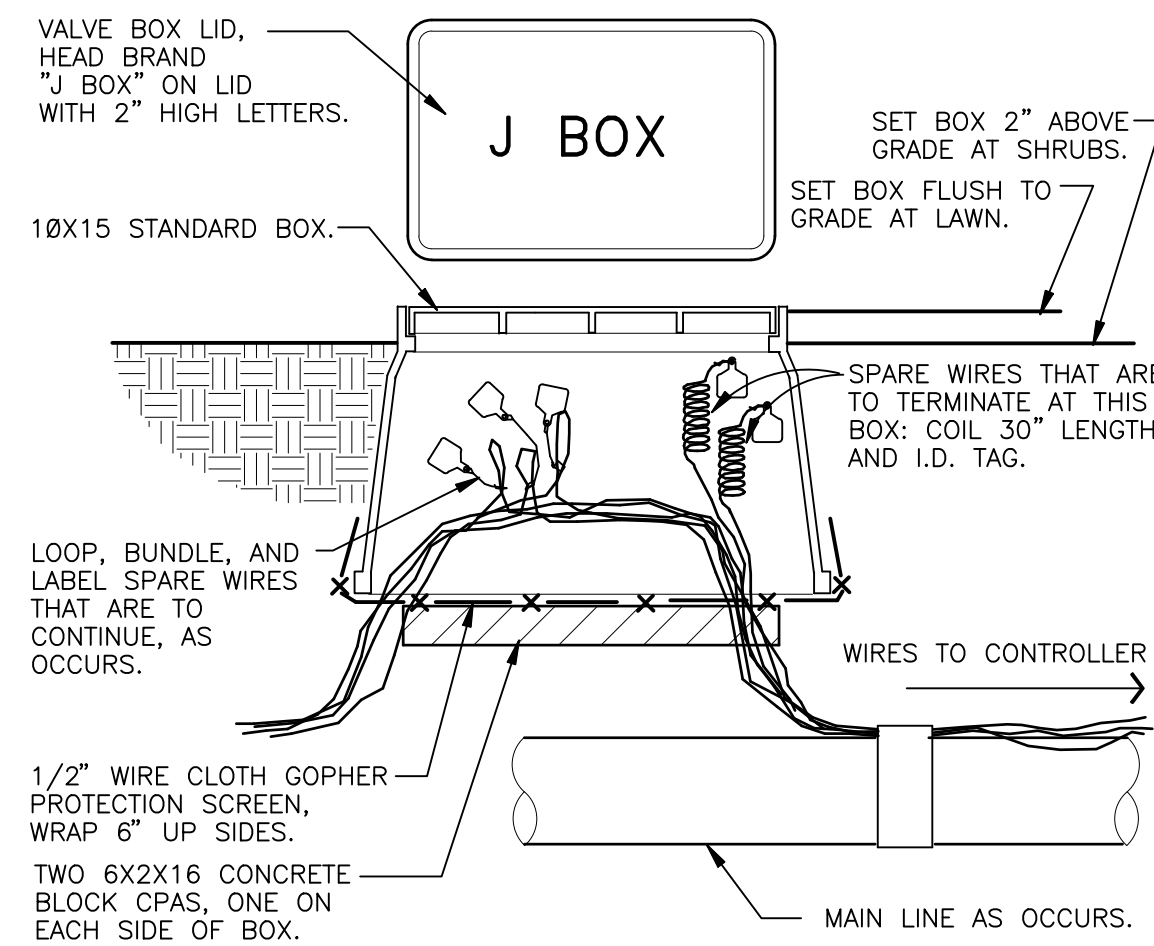
2 TRENCHING DETAIL
NOT TO SCALE 32 8409.76-03



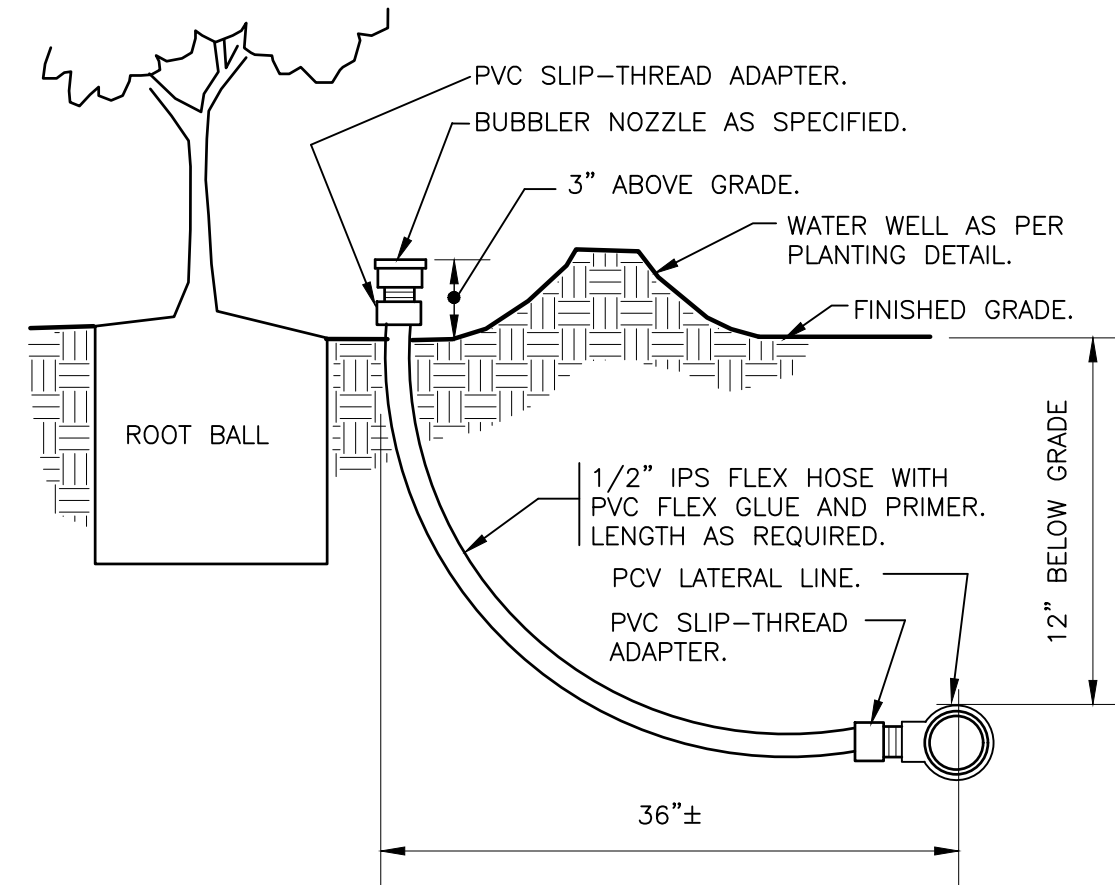
3 ELECTRIC REMOTE CONTROL VALVE
1 1/2" = 1'-0" 32 8406.13-01



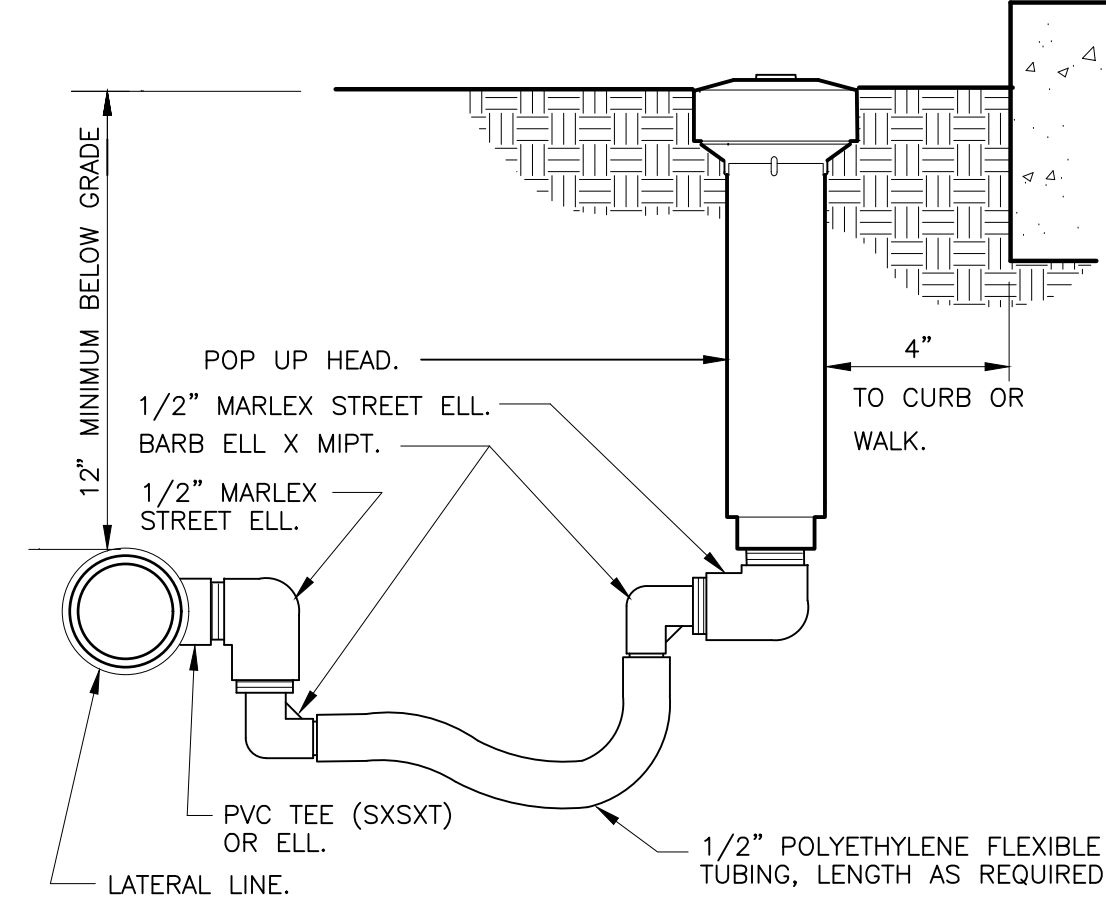
4 BRASS BALL ISOLATION VALVE
1 1/2" = 1'-0" 32 8406.33-02



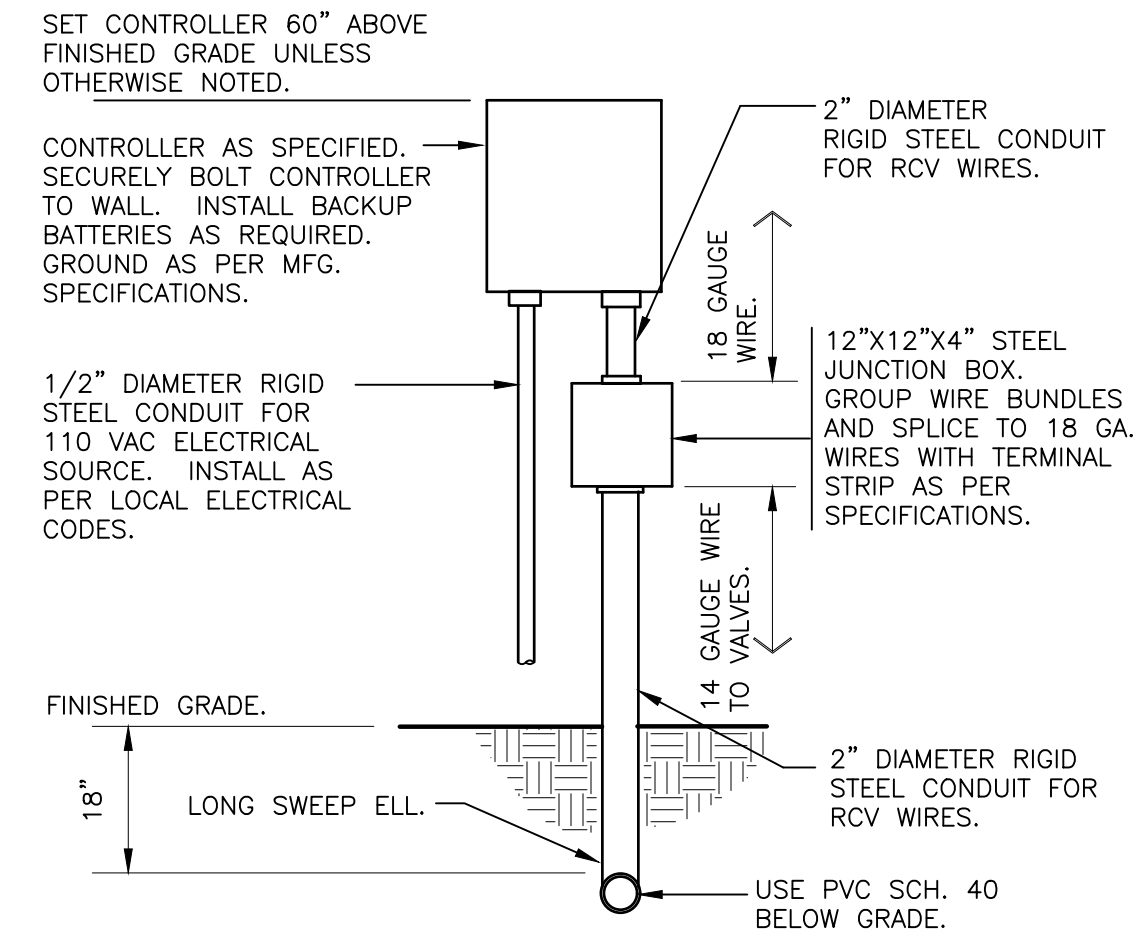
5 WIRE BUNDLE JUNCTION BOX
1 1/2" = 1'-0" 32 8409.79-01



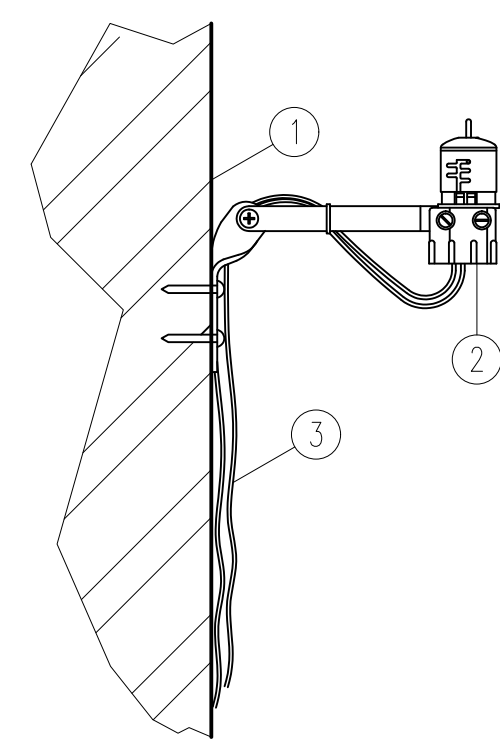
6 BUBBLER ON FLEX HOSE RISER
3" = 1'-0" DETAIL-FILE



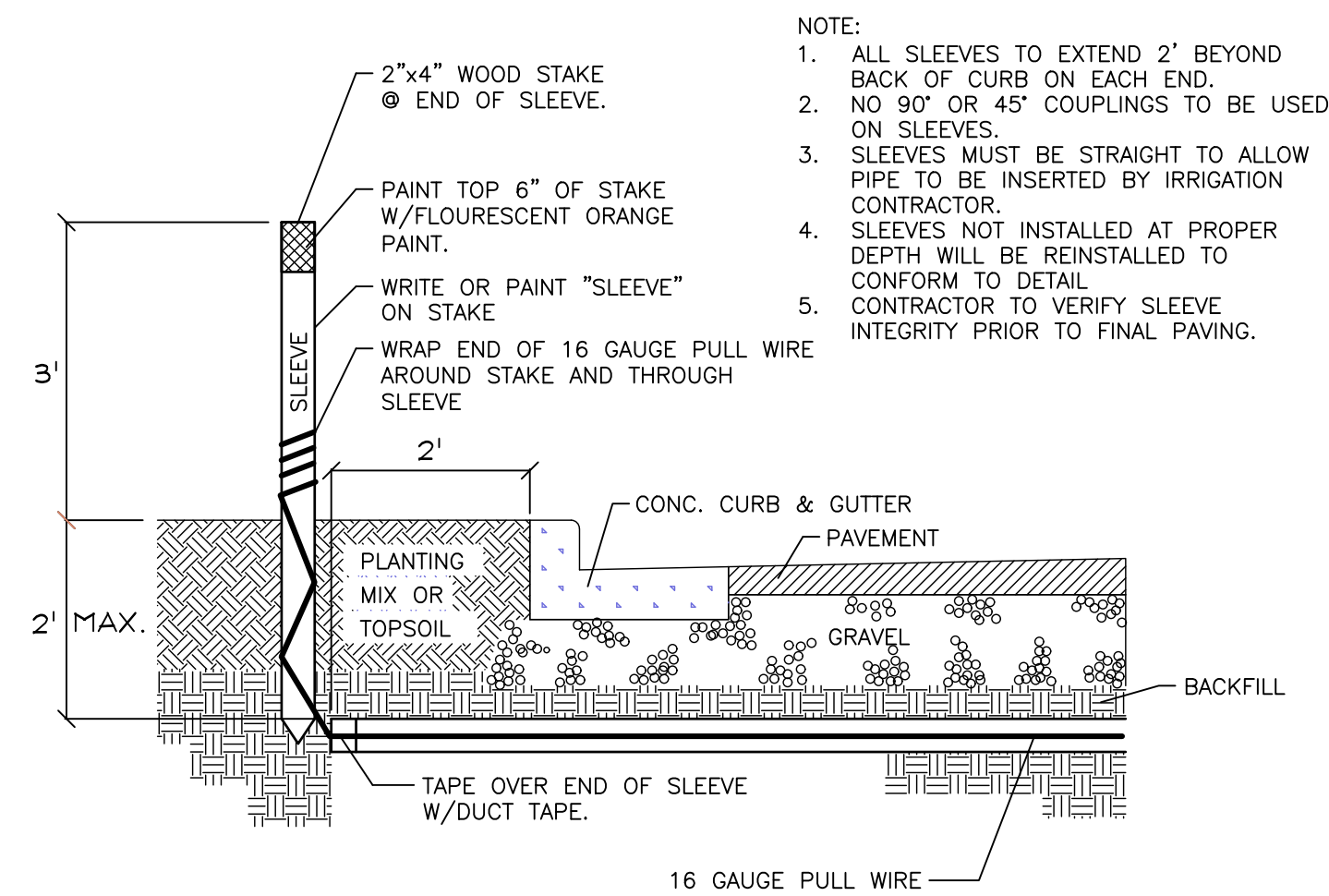
7 POP-UP SPRAY FLEX ASSEMBLY



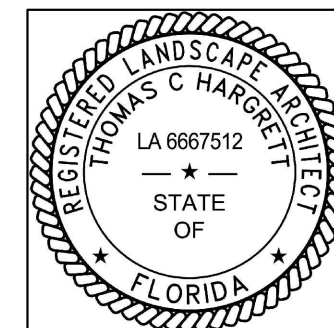
8 WALL MOUNT CONTROLLER 1" = 1'-0" 328409.13-02



9 RAIN SENSOR



10 IRRIGATION SLEEVING



THE ITEM HAS BEEN DIGITALLY SIGNED AND SEALED BY TOM HARGRETT ON THE DATE ADJACENT TO THE SEAL.

PRINTED COPIES OF THIS DOCUMENT ARE NOT CONSIDERED
SIGNED AND SEALED AND THE SIGNATURE MUST BE VERIFIED
ON ANY ELECTRONIC COPIES.